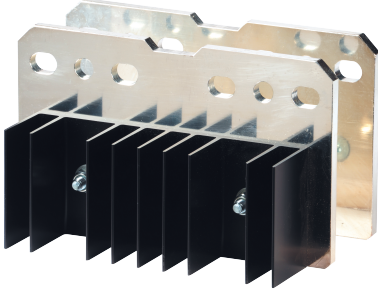


26092025

KIT 2 BRIDGING BAR 315A 2P B4 SIRCO PV

The bridging bars will make easy the connection of the poles in series, allowing the following configurations.



Link to the reference



<https://emea.socomec.com/en/reference/26092025>

Classification

| | |
|------------|----------|
| UNSPSC | 39122233 |
| ETIM Class | EC002498 |
| IGCC | 5290 |

Commerce

| | |
|-----------------------|------------|
| Effective date | 2009-12-07 |
| Offer Life Cycle Code | 40 |
| Country of origin | FR |

Logistics

| | |
|---------------------------------|---------------|
| GTIN/EAN | 3596031985302 |
| Customs number | 8538909999 |
| Price unit | PC |
| Weight of the packing unit [kg] | 0.12 |
| Length of the packing unit [m] | 0.075 |
| Width of the packing unit [m] | 0.03 |
| Depth of the packing unit [m] | 0.003 |

Technical Characteristics

| | |
|--------------------------|------|
| Height [mm] | 75 |
| Width [mm] | 27 |
| Depth [mm] | 4 |
| Weight [kg] | 0.12 |
| Number of poles | 2 |
| Rated current [A] | 315 |
| Suitable with frame size | B4 |