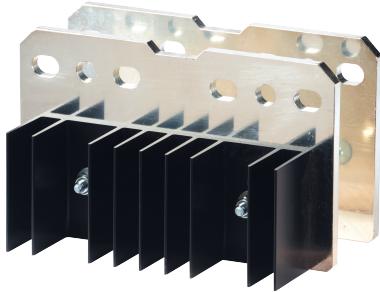


**26090080**

## Kit 2 BRIDGING BAR SIRCO PV B5 2P 630A

The bridging bars will make easy the connection of the poles in series, allowing the following configurations.



Link to the reference



<https://emea.socomec.com/en/reference/26090080>

### Classification

UNSPSC	39122233
ETIM Class	EC002498
IGCC	5290

### Commerce

Effective date	2009-12-07
Offer Life Cycle Code	40
Country of origin	FR

### ETIM - Technical features

Type of accessory/spare part	Connecting bridge
------------------------------	-------------------

### Logistics

GTIN/EAN	3596031985333
Customs number	8538909999
Price unit	PC
Weight of the packing unit [kg]	0.91
Length of the packing unit [m]	0.004
Width of the packing unit [m]	0.026
Depth of the packing unit [m]	0.075

### Technical Characteristics

Height [mm]	110
Width [mm]	100
Depth [mm]	5
Weight [kg]	0.91
Number of poles	2
Rated current [A]	630
Suitable with frame size	B5