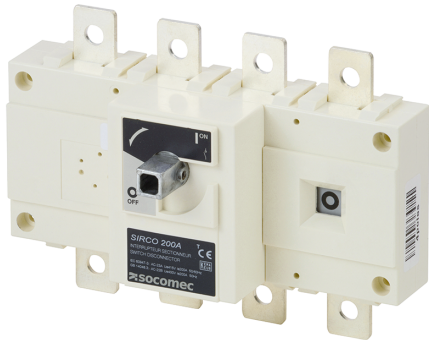


26004032

Manual Load break switch SIRCO 4P 315A 415 VAC Front Operation



Strong points

- Reliability and performance
- Safety of property and personnel
- Simplicity
- Easy to install

General characteristics

- Double positive break indication given through a position indication window, located directly on the product, and by the operating handle.
- Severe load duty categories (AC-22 and AC-23).
- High resistance to damp heat (supplied 'tropicalised').

Compliance with standards

- IEC 60947-3

Link to the reference



<https://emea.socomec.com/en/reference/26004032>

SIRCO are manually operated multipolar load break switches. They make and break under load conditions and provide safety isolation. SIRCO are designed for 415 VAC and DC low voltage electrical circuits.

Classification

UNSPSC	39122233
ETIM Class	EC000216
IGCC	5290

Commerce

Description	Manually operated Load break switch SIRCO frame B5 with 4 poles, 315A, 415VAC/500VDC frontal direct operation with handle type J0 or frontal external operation with handle type S2. Delivered without handle
Effective date	1993-04-14
Offer Life Cycle Code	40
Country of origin	TN

Environmental Sustainability

Climate change - Total - Cradle to Grave [kg CO ₂ eq.]	197
Climate change - Total - Cradle to Gate [kg CO ₂ eq.]	29
SVHC > 0.1 mass percentage?	No
RoHS applicable?	Yes

ETIM - Electrical characteristics

Max. rated operation voltage Ue AC [V]	500
Rated operating voltage [V]	400..500
Rated permanent current Iu [A]	315
Rated permanent current at AC-23, 400 V [A]	315
Rated permanent current at AC-21, 400 V [A]	315
Rated short-time withstand current Icw [kA]	13
Rated operation power at AC-23, 400 V [kW]	160
Switching power at 400 V [kW]	160
Conditioned rated short-circuit current Iq [kA]	100
Number of poles	4

ETIM - Mechanical characteristics

Suitable for floor mounting	No
Suitable for front mounting 4-hole	No
Suitable for front mounting centre	No
Suitable for distribution board installation	No
Suitable for intermediate mounting	Yes
Colour control element	Other
Degree of protection (IP), front side	IP20
Width [mm]	290
Height [mm]	235

Depth [mm]	110
ETIM - Technical features	
Version as main switch	Yes
Version as maintenance-/service switch	Yes
Version as safety switch	Yes
Version as emergency stop installation	Yes
Version as reversing switch	No
Number of switches	1
Motor drive optional	No
Motor drive integrated	No
Voltage release optional	No
Device construction	Built-in device fixed built-in technique
Type of control element	Other
Interlockable	Yes
Type of electrical connection of main circuit	Bolt connection
Logistics	
GTIN/EAN	3596031118786
Customs number	8536508000
Price unit	PC
Weight of the packing unit [kg]	4.87
Length of the packing unit [m]	0.29
Width of the packing unit [m]	0.15
Depth of the packing unit [m]	0.275
Norms	
Conformity to standards	IEC
Technical Characteristics	
Height [mm]	235
Width [mm]	290
Depth [mm]	110
Weight [kg]	4.87
Control operator	Direct : B2, J1 / External : S2
Number of poles	4
Rated voltage	415 VAC / 500 VDC
Rated current [A]	315
Type	Front Operation
Frame size	B5