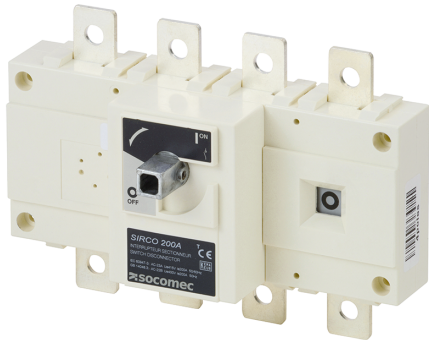


26004026

Manual Load break switch SIRCO 4P 250A 415 VAC Front Operation



Strong points

- Reliability and performance
- Safety of property and personnel
- Simplicity
- Easy to install

General characteristics

- Double positive break indication given through a position indication window, located directly on the product, and by the operating handle.
- Severe load duty categories (AC-22 and AC-23).
- High resistance to damp heat (supplied 'tropicalised').

Compliance with standards

- IEC 60947-3

Link to the reference



<https://emea.socomec.com/en/reference/26004026>

SIRCO are manually operated multipolar load break switches. They make and break under load conditions and provide safety isolation. SIRCO are designed for 415 VAC and DC low voltage electrical circuits.

Classification

UNSPSC	39122233
ETIM Class	EC000216
IGCC	5290

Commerce

Description	Manually operated Load break switch SIRCO frame B4 with 4 poles, 250A, 415VAC/500VDC frontal direct operation with handle type J1 or frontal external operation with handle type S2. Delivered without handle
Effective date	1993-04-14
Offer Life Cycle Code	40
Country of origin	TN
Former product list	25004025 SIRCO VM2 4X250A F

Environmental Sustainability

Climate change - Total - Cradle to Grave [kg CO ₂ eq.]	140
Climate change - Total - Cradle to Gate [kg CO ₂ eq.]	13
SVHC > 0.1 mass percentage?	No
RoHS applicable?	Yes

ETIM - Electrical characteristics

Max. rated operation voltage Ue AC [V]	500
Rated operating voltage [V]	400..500
Rated permanent current Iu [A]	250
Rated permanent current at AC-23, 400 V [A]	250
Rated permanent current at AC-21, 400 V [A]	250
Rated short-time withstand current Icw [kA]	9
Rated operation power at AC-23, 400 V [kW]	140
Switching power at 400 V [kW]	140
Conditioned rated short-circuit current Iq [kA]	50
Number of poles	4

ETIM - Mechanical characteristics

Suitable for floor mounting	No
Suitable for front mounting 4-hole	No
Suitable for front mounting centre	No
Suitable for distribution board installation	No
Suitable for intermediate mounting	Yes
Colour control element	Other
Degree of protection (IP), front side	IP20
Width [mm]	230

Height [mm]	160
Depth [mm]	75
ETIM - Technical features	
Version as main switch	Yes
Version as maintenance-/service switch	Yes
Version as safety switch	Yes
Version as emergency stop installation	Yes
Version as reversing switch	No
Number of switches	1
Motor drive optional	No
Motor drive integrated	No
Voltage release optional	No
Device construction	Built-in device fixed built-in technique
Type of control element	Other
Interlockable	Yes
Type of electrical connection of main circuit	Bolt connection
Logistics	
GTIN/EAN	3596031118755
Customs number	8536508000
Price unit	PC
Weight of the packing unit [kg]	2.14
Length of the packing unit [m]	0.239
Width of the packing unit [m]	0.108
Depth of the packing unit [m]	0.183
Norms	
Conformity to standards	IEC
Technical Characteristics	
Height [mm]	160
Width [mm]	230
Depth [mm]	75
Weight [kg]	2.14
Control operator	Direct : B2, J1 / External : S2
Number of poles	4
Rated voltage	415 VAC / 500 VDC
Rated current [A]	250
Type	Front Operation
Frame size	B4