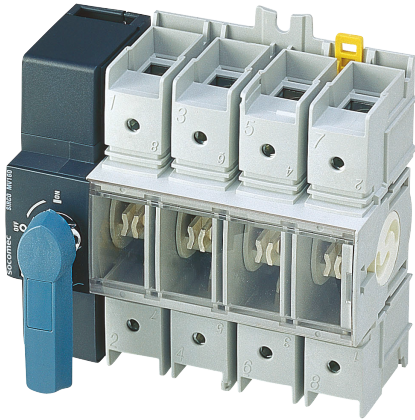


22004012

Load break switch body SIRCO MV 4P 125A 690 VAC Front or lateral



Strong points

- Total integration
- A wide range of accessories
- Compliance with major certifications and approvals

General characteristics

- Double break per pole.
- IP20 devices and accessories.
- Severe utilisation categories (AC-22 and AC-23).
- Mounting options: DIN rail, back plate or modular panel with 45 mm cut out.
- SIRCO MV: Visible double breaking based on a rotating contact system.

Compliance with standards

- IEC 60947-3
- GB/T 14048.3

Link to the reference



<https://emea.socomec.com/en/reference/22004012>

SIRCO MV are manually operated modular multipolar load break switches.

They make and break under load conditions and provide safety isolation for any low voltage circuit, particularly for machine control circuits

Classification

UNSPSC	39122233
ETIM Class	EC000216
IGCC	5290

Commerce

Description	Manual Load break switch with visible breaking SIRCO MV with 4 poles, 125A, 690 VAC - 400 VDC frontal/lateral direct operation with handle type M0, M0b or frontal/lateral external operation with handle type S0, S1. Delivered without handle
Effective date	2006-04-25
Offer Life Cycle Code	40
Country of origin	TN
Former product list	25004012 SIRCO VM2 4X125A F

Environmental Sustainability

Climate change - Total - Cradle to Grave [kg CO ₂ eq.]	100
Climate change - Total - Cradle to Gate [kg CO ₂ eq.]	7
SVHC > 0.1 mass percentage?	No
RoHS applicable?	Yes

ETIM - Electrical characteristics

Max. rated operation voltage Ue AC [V]	690
Rated operating voltage [V]	400..690
Rated permanent current Iu [A]	125
Rated permanent current at AC-23, 400 V [A]	125
Rated permanent current at AC-21, 400 V [A]	125
Rated short-time withstand current Icw [kA]	7
Rated operation power at AC-23, 400 V [kW]	63
Switching power at 400 V [kW]	63
Conditioned rated short-circuit current Iq [kA]	65
Number of poles	4

ETIM - Mechanical characteristics

Suitable for floor mounting	No
Suitable for front mounting 4-hole	No
Suitable for front mounting centre	No
Suitable for distribution board installation	Yes
Suitable for intermediate mounting	Yes
Colour control element	Other

Degree of protection (IP), front side	IP20
Width [mm]	135
Height [mm]	189
Depth [mm]	64
ETIM - Technical features	
Version as main switch	Yes
Version as maintenance-/service switch	Yes
Version as safety switch	Yes
Version as emergency stop installation	Yes
Version as reversing switch	No
Number of switches	1
Motor drive optional	No
Motor drive integrated	No
Voltage release optional	No
Device construction	Built-in device fixed built-in technique
Type of control element	Other
Interlockable	Yes
Type of electrical connection of main circuit	Screw connection
Logistics	
GTIN/EAN	3596031935062
Customs number	8536508000
Price unit	PC
Weight of the packing unit [kg]	1.02
Length of the packing unit [m]	0.183
Width of the packing unit [m]	0.087
Depth of the packing unit [m]	0.166
Norms	
Conformity to standards	IEC UL
Technical Characteristics	
Height [mm]	189
Width [mm]	135
Depth [mm]	64
Weight [kg]	1.02
Control operator	Direct : M0, M0b / External : S0, S1
Number of poles	4
Rated voltage	690 VAC - 400 VDC
Rated current [A]	125
Type	Front or lateral operation
Frame size	MV